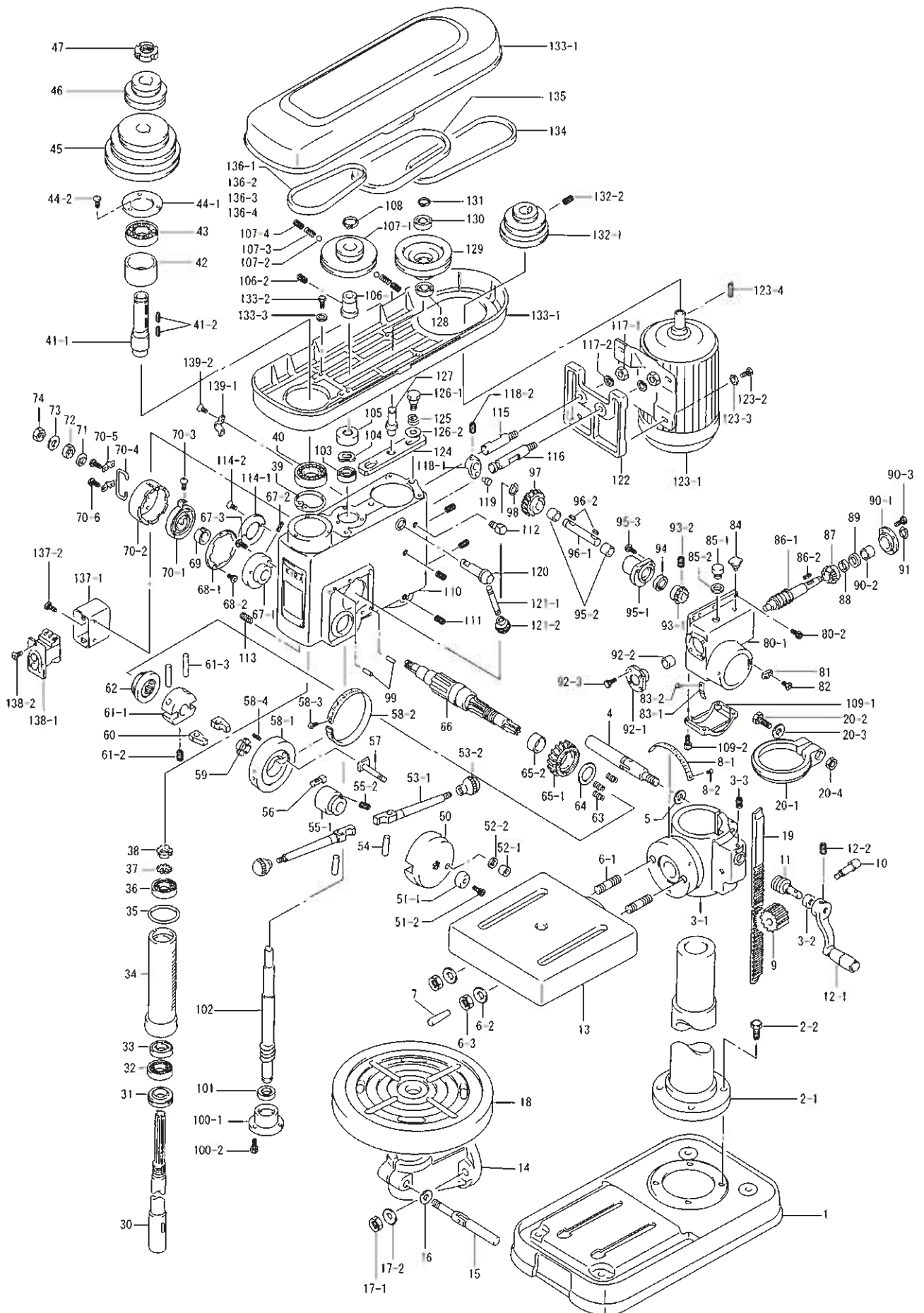


10. PARTS LIST



NO	Spec	Part number	Part name	Remark	Q'ty
1		KI-1-C	Bed		1
2-1	C	KI-2-F	Column		1
2-1	200L	KI-2-4D	Column	200mm(long)	1
2-2		BT1-M10*035	Hex. bolt	M10*35	4
3-1		KI-4-G	Bracket		1
3-2		KI-79-A	Bush		1
3-3		BTA-M06*015-K	Hex. socket head stop screw	M6*15 (Cup point)	1
4		AS1-KI-5-1B	Clamp bolt with handle		1
5		ZG1-M12	Plain washer	M12	1
6-1		KI-8-A	Bolt		2
6-2	S4	ZG1-5/8-A	Plain washer	5/8	2
6-3	S4	NT1-M16	Hex. nut	M16	2
7		PN2-06*030	Taper pin	6*30	1
8-1	S4	KI-4-2B	Name plate		1
8-2	S4	BTD-#2*5	Tack	#2*4.8	2
9		KI-76-A	Gear(16T)		1
10		KI-77-B	Shaft		1
11		KI-78-1	Shaft (Worm)		1
12-1		KI-81-D	Handle		1
12-1		KI-1059-C	Pin		1
12-1		KI-1060-D	Knob		1
12-2		BTA-M08*012-K	Hex. socket head stop screw	M8*12 (Cup point)	1
13	S4	KI-7-D	Table		1
14	R4	KI-4R-D	Holder		1
15	R4	AS1-KI-5-1B	Clamp bolt with handle		1
16	R4	ZG1-M12	Plain washer	M12	1
17-1	R4	NT1-M16	Hex. nut	M16	2
17-2	R4	ZG1-5/8-A	Plain washer	5/8	2
18	R4	KI-7R-D	Table		1
19		KI-85-D	Rack	16*20*620	1
20-1		KI-89-B	Stop ring		1
20-2		BT1-M08*055	Hex. bolt	M8*55	1
20-3		ZG1-M08-U	Plain washer	M8	1
20-4		NT1-M08	Hex. nut	M8	1
30		KI-20-5J	Spindle	(φ38*523)	1
31		KI-21-5B	Collar		1
32		BE1-6006ZZ	Ball bearing	6006ZZ	1
33		BE6-51106	Thrust ball bearing	51106	1
34		KI-15-5H	Rack sleeve		1
35		2C-2114-A	Packing		1
36		BE1-6005ZZ	Ball bearing	6005ZZ	1
37		ZG5-AW05	Bearing washer	AW05	1
38		NT3-AN05	Bearing nut	AN05	1
39		RG1-R072	Stop ring	R72	1
40		BE1-6207ZZ	Ball bearing	6207ZZ	1
41-1		4B-2301-5D	Shaft	(φ42*1830)	1
41-2		KY1-05*05*028RR	Parallel key	5*5*28RR	2
42		COL1-062070035B	Collar (1)	KI-29 (Previous)	1
43		BE1-6207ZZ	Ball bearing	6207ZZ	1
44-1		KI-30-A	Cover		1
44-2		BT6-M06*010	Cross recessed head machine screw	M6*10	3

10. PARTS LIST

NO	Spec	Part number	Part name	Remark	Q'ty
45		4B-2309-B	Pulley		1
46		4B-2310-A	Feed pulley		1
47		NT3-AN07	Bearing nut	AN07	1
50		2B-2216-9C	Boss		1
51-1		2C-2428-A	Collar		1
51-2		BT2-M06*015	Hex socket head bolt	M6*15	1
52-1		2B-2217-8A	Nut		1
52-2		ZG1-M08-U	Plain washer	M8	1
53-1		2B-2281-8D	Handle	(n 15*171)	2
53-2		KN-41-A	Knob		2
54		OTZ-8*40G	Grooved pin	G • 8*40	2
55-1		2B-2212-9D	Cam	(φ60*1830)	1
55-2		BTA-M05*008-K	Hex. socket head stop screw	M5*8 (Cup point)	1
56		2B-2214-8C	Cam		1
57		2B-2215-8E	Bolt		1
58-1		2B-2213-8E	Flange		1
58-2		2B-2803-8C	Name plate		1
58-3		BTD-#2*5	Tack	#2*4.8	2
58-4		PN3-05*012	Spring pin	5*12	1
59		NT3-AN05	Bearing nut	AN05	1
60		2B-2208-8A	Cam		2
61-1		2B-2209-8B	Bracket	(φ75*29)	1
61-2		BTA-M06*006-K	Hex. socket head stop screw	M6*6 (Cup point)	1
61-3		OTZ-8*40G	Grooved pin	G • 8*40	2
62		2B-2207-8D	Clutch	(φ80*32)	1
63		3B-2208-8A	Coil spring		3
64		COL1-028042003B	Collar (1)	3B-2205 (Previous)	1
65		AS0-4B2202-6	Gear (Ass'y)		1
65-1		4B-2202-6D	Gear		1
65-2		4B-2203-A	Bush		1
66		4B-2201-8H	Pinion shaft	(φ50*358)	1
67-1		2C-2246-B	Bush		1
67-2		PN3-06*020	Spring pin	6*20	1
67-3		BT6-M06*020-U	Cross recessed head machine screw	M6*20	3
68-1		2C-2261-B	Plate		1
68-2		BT7-M03*006-PL	Countersunk head screw	M3*6	3
69		2C-2252-A	Collar		1
70		2C-2250A	Spring case set		1
70-1		2C-2249-A	Spiral spring		1
70-2		2C-2250-2B	Case		1
70-3		BT6-M04*008-PL	Cross recessed head machine screw	M4*8	1
70-4		2C-2263-B	Handle		1
70-5		2C-2264-B	Handle stop ring		2
70-6		BT6-M04*006-PL	Cross recessed head machine screw	M4*6	4
70-7		ZG1-M04-PL	Plain washer	M4	1
71		COL1-015025006B	Collar (1)	2C-2253-2	1
72		3B-2219-A	Nut		1
73		ZG1-M14	Plain washer	M14	1
74		3B-2245-A	Nut		1
80-1		4B-2401-8D	Box		1

NO	Spec	Part number	Part name	Remark	Q'ty
80-2		BT2-M06*012	Hex socket head bolt	M6*12	4
81		2B-2280-8C	Cam		1
82		BT9-M05*015	Hex. socket countersunk head screw	M5*15	1
83-1		2B-2802-8A	Name plate		1
83-2		BTD-#2*5	Tack	#2*4.8	2
84		LCC-#211-1/4	Oil cup	1/4	1
85-1		2C-2612-A	Cap		1
85-2		2C-2613-A	Packing		1
86-1		4B-2481-B	Shaft	(ϕ 36*171)	1
86-2		KY1-05*05*014RR	Parallel key	5*5*14RR	1
87		3B-2425-A	Bevel gear		1
88		COL1-015024008B	Collar(1)	4B-2486 (Previous)	1
89		BE6-51102	Thrust ball bearing	51102	1
90-1		3B-2482-B	Metal		1
90-2		2C-2418-B	Bush		1
90-3		BT1-M06*015	Hex. bolt	M6*15	4
91		RG1-S015	Stop ring	S15	1
92-1		3B-2483-B	Metal		1
92-2		2C-2418-B	Bush		1
92-3		BT1-M06*015	Hex. bolt	M6*15	4
93-1		3B-2424-C	Bevel gear	M6 thread	1
93-2		BTA-M06*006-K	Hex. socket head stop screw	M6*68 (Cup point)	1
94		BE6-51102	Thrust ball bearing	51102	1
95-1		4B-2432-1B	Metal		1
95-2		2C-2418-B	Bush		2
95-3		BT1-M06*020	Hex. bolt	M6*20	3
96-1		3B-2421-A	Shaft		1
96-2		KY1-05*05*014RR	Parallel key	5*5*14RR	2
97		4B-2422-B	Gear	50*1000	1
98		RG1-S015	Stop ring	S15	1
99		PN1-06*020	Parallel Pin	6h7*20	2
100-1		4B-2407-B	Case		1
100-2		BT2-M06*012	Hex socket head bolt	M6*12	3
101		BE1-6203ZZ	Ball bearing	6203ZZ	1
102		4B-2405-B	Shaft	(ϕ 30*369)	1
103		BE1-6203ZZ	Ball bearing	6203ZZ	1
104		ZG6-VWV30	Wave washer	VWV30	1
105		4B-2412-2B	Case		1
106-1		4B-2415-E	Holder	(ϕ 38*1830)	1
106-2		BTA-M06*010-K	Hex. socket head stop screw	M6*10 (Cup point)	1
107-1		4B-2414-A	Pulley		1
107-2		BEZ-1/4	Steel ball		2
107-3		4B-2208-2	Coil spring		2
107-4		BTG-M08*008	Slotted set screw	M8*8	2
108		RG1-S028	Stop ring	S28	1
109-1		4B-2631-B	Box		1
109-2		BT2-M06*012	Hex socket head bolt	M6*12	4
110		4B-2001-H	Head		1
111		BTA-M12*015-K	Hex. socket head stop screw	M12*15 (Cup point)	4
112		BT1-M10*030	Hex. bolt	M10*30	1
113		4C-2117-A	Key	(M10*25)	1

10. PARTS LIST

NO	Spec	Part number	Part name	Remark	Q'ty
114-1		3B-2605-A	Cover		1
114-2		BT6-M04*010	Cross recessed head machine screw	M4*10	2
115		4B-2366-2B	Guide		1
116		4B-2365-3B	Guide		1
117-1		NT1-M12	Hex. nut	M12	2
117-2		ZG2-M12-U	Spring washer	M12	2
118-1		3B-2374-A	Shifter		1
118-2		BTA-M10*012-K	Hex. socket head stop screw	M10*12 (Cup point)	1
119		3B-2376-A	Pin		1
120		4B-2368-2C	Shaft		1
121-1		2C-2341-A	Handle		1
121-2		KN-41-A	Knob		1
122		16B-2364-B	Base(Motor)		1
123-1		MO1-0.75KW*6*200B-A	Motor	MLK1097F(90L)	1
123-2		BT1-M08*020	Hex. bolt	M8*20	4
123-3		ZG1-M08-U	Plain washer	M8	4
123-4		OTZ-08*07*035HH	Parallel key		1
124		3C-2321-A	Holder		1
125		3C-2330-B	Coil spring		2
126-1		3C-2323-A	Pin		2
126-2		OTZ-M14-t3.2	Plain washer	M14	2
127		4C-2324-B	Shaft		1
128		BE1-6203ZZ	Ball bearing	6203ZZ	1
129		4B-2325-A	Pulley		1
130		BE1-6203ZZ	Ball bearing	6203ZZ	1
131		RG1-S017	Stop ring	S17	1
132-1		16B-2360-1A	Pulley(Motor))	4B-2360	1
132-2		BTA-M06*012-K	Hex. socket head stop screw	M6*12 (Cup point)	1
133-1		2C-2601-A	Cover (Ass'y)		1
133-2		BT1-M08*015	Hex. bolt	M8*15	4
133-3		ZG1-M08-U	Plain washer	M8	4
134		BL1-A-27-R	V Belt	A-27	1
135		BL1-A-34-R	V Belt	A-34	1
136-1		BL1-A-17	V Belt	A-17 (Accessory)	1
136-2		BL1-A-19	V Belt	A-19 (Accessory)	1
136-3		BL1-A-21	V Belt	A-21 (Accessory)	1
136-4		BL1-A-23	V Belt	A-23 (Accessory)	1
137-1		1C-2711-A	Box		1
137-2		BTH-M04*010-P3-M	Cross recessed head upset bolt	M4*010	2
138		KI-2702-2	Push button switch	BSP215NB3KRC	1
139-1		LCA-PZ0108	Pipe band	(PZ0108)	1
139-2		BT6-M04*006	Cross recessed head machine screw	M4*6	2